
Jeffrey COTTAGE (c. 1626-)

1. **Jeffrey COTTAGE** (also known as Jeffrey COTTEY) was born circa 1626 in Bottisham, Cambridgeshire. He married **Alice COTTAGE**.

Alice COTTAGE was born between 1620 and 1630. She and Jeffrey COTTAGE had the following children:

- +2 Thomas COTTAGE (c. 1646-1684?)

Second Generation

2. **Thomas COTTAGE** (also known as Thomas COTTEY and Thomas COTTIS), son of Jeffrey COTTAGE and Alice COTTAGE, was born circa 1646 in Bottisham, Cambridgeshire. He married **Ann COTTAGE** before 1664. He died in 1684 (estimated). He was buried on 26 February 1684 aged 38.

Ann COTTAGE was buried on 13 January 1699. She and Thomas COTTAGE had the following children:

- +3 Thomas COTTAGE (c. 1664-1715?)

Third Generation

3. **Thomas COTTAGE** (also known as [unnamed person]), son of Thomas COTTAGE and Ann COTTAGE, was born circa 1664 in Linton, Cambridgeshire. He was baptised on 10 August 1664 in Linton. He married **Elizabeth RICHES** on 24 November 1705 in Linton. He died in 1715 (estimated) in Linton. He was buried on 4 April 1715 in Linton aged 50.

Elizabeth RICHES was born circa 1673 in Chatteris, Cambridgeshire. She was baptised on 11 January 1673 in Chatteris. She was buried on 6 April 1715 in Linton aged 42. She and Thomas COTTAGE had the following children:

- +4 Thomas COTTAGE (c. 1706-)
 5 Robert COTTAGE (1709?-). *Robert was born in October 1709 (estimated). He was baptised on 13 November 1709 in Linton.*
 6 Anne COTTAGE (1708?-). *Anne was born in June 1708 (estimated). She was baptised on 18 July 1708 in Linton.*

Fourth Generation

4. **Thomas COTTAGE**, son of Thomas COTTAGE and Elizabeth RICHES, was born circa 1706 in Linton, Cambridgeshire. He was baptised on 27 September 1706 in Linton. He married **Sarah PAGE** on 3 October 1727 in Balsham, Cambridgeshire.

Sarah PAGE was born circa 1706 in Balsham. She and Thomas COTTAGE had the following children:

- +7 John COTTAGE (b.c. 1731, bur.1805)

Fifth Generation

7. **John COTTAGE**, son of Thomas COTTAGE and Sarah PAGE, was born circa 1731 in Balsham, Cambridgeshire. He was baptised on 11 June 1731 in Balsham. He married **Mary GOWERS** on 12 October 1756 in Balsham. He was buried on 7 April 1805 in Weston Colville, Cambridgeshire aged 73.

Mary GOWERS was born in 1732 (estimated). She was buried on 5 July 1810 in Weston Colville. She and John COTTAGE had the following children:

- +8 Isaac COTTAGE (bap.1757, d.1820?)
 9 William Gowers COTTAGE (1760?-). *William was born in 1760 (estimated). He was baptised on 5 October 1760.*

Sixth Generation

8. **Isaac COTTAGE**, son of John COTTAGE and Mary GOWERS, was baptised on 24 July 1757 in Weston Colville, Cambridgeshire. He was a Labourer. He married **Grace WAKELING** on 20 July 1778 in Linton, Cambridgeshire. They had marriage banns published on 29 November 1778 in Linton. He died on 1 September 1820 (estimated) in Linton. He was buried on 14 September 1820 in Linton aged 63.

Grace WAKELING died of Not Known in March 1835 (estimated) in Linton. She married James PORTER on 14 January 1844 in Linton. She and Isaac COTTAGE had the following children:

- +10 William COTTAGE (1781?-)
- +11 John COTTAGE (1784-1852)
- +12 Phoebe COTTAGE (1788-)
- 13 Thomas COTTAGE (1794-). *Thomas was born on 27 March 1794 in Linton. He was baptised on 6 April 1794 in Linton.*
- +14 David COTTAGE (1798-1846)
- +15 Stephen COTTAGE (1802-1881)
- +16 George COTTAGE (1804-1852)

Seventh Generation

10. **William COTTAGE**, son of Isaac COTTAGE and Grace WAKELING, was born in 1781 (estimated) in Linton, Cambridgeshire. He was baptised on 2 September 1781 in Linton. He married **Sarah HEDGE** on 27 February 1820 in Melton Mowbray, Leicestershire.

11. **John COTTAGE**, son of Isaac COTTAGE and Grace WAKELING, was born on 27 March 1784 in Linton. He was baptised on 11 April 1784 in Linton. He was a Labourer. He and **Mary COWLING** had marriage banns published on 22 March 1801 in Linton. He married her on 31 March 1801 in Linton. He and **Elizabeth CARTWRIGHT** had marriage banns published on 8 February 1820 in Linton. He married her on 12 February 1820 in Linton. He died in May 1852 in Linton. He was buried on 5 June 1852 in Linton aged 68.

Mary COWLING was born on 19 August 1781 in Linton. She was baptised on 19 August 1781 in Linton. She died on 9 May 1819. She and John COTTAGE had the following children:

- 17 Anne COTTAGE (1801-). *Anne was born on 5 September 1801 in Linton. She was baptised on 3 November 1801 in Linton.*
- +18 William COTTAGE (1805-1831)
- +19 John COTTAGE (1810-1868)
- +20 Mary Anne COTTAGE (1813-)
- 21 Alice COTTAGE (1816-). *Alice was born on 7 February 1816 in Linton. She was baptised on 10 April 1816 in Linton.*

Elizabeth CARTWRIGHT was born circa 1783. She died before 29 October 1868 in Linton aged 85. She was buried on 29 October 1868 in Linton. She and John COTTAGE had the following children:

- +22 John COTTAGE (1816-)
- 23 Sarah COTTAGE (1816-). *Sarah was born on 17 September 1816. She was baptised on 2 February 1817 in Linton.*

12. **Phoebe COTTAGE**, daughter of Isaac COTTAGE and Grace WAKELING, was born on 18 January 1788 in Linton. She and **William CORNELL** had marriage banns published on 10 February 1811 in Linton. She married him on 13 February 1811 in Linton.

14. **David COTTAGE**, son of Isaac COTTAGE and Grace WAKELING, was born on 19 July 1798 in Linton. He was baptised on 29 July 1798 in Linton. He was a Labourer. He married **Ann HILLS** on 25 December 1818 in Hadstock, Essex. He died in April 1846 in Linton. He was buried on 4 May 1846 in Linton aged 47.

Ann HILLS was born in 1795. She died in January 1857 (estimated) in Linton. She was buried on 31 January 1857 in Linton. She and David COTTAGE had the following children:

- +24 Isaac COTTAGE (1823-)
- +25 Grace COTTAGE (c. 1818-)

- 26 Marianne COTTAGE (1824-1825?). *Marianne was born on 11 November 1824. She was baptised on 25 December 1824 in Linton. She died on 12 May 1825 (estimated). She was buried on 29 May 1825 in Linton.*
- 27 Mary Ann COTTAGE (1826-). *Mary was born on 12 June 1826 in Linton. She was baptised on 25 December 1826 in Linton.*
- 28 Emma COTTAGE (1827-1839?). *Emma was born on 11 August 1827. She was baptised on 15 June 1828 in Linton. She died of unknown in December 1839 (estimated) in Linton.*
- +29 David COTTAGE (1830-)
- 30 Mary Anne COTTAGE (1831-). *Mary was born on 27 June 1831 in Linton. She was baptised on 25 September 1831 in Linton.*
- 31 Eliza COTTAGE (1833-1861?). *Eliza was born on 5 October 1833 in Linton. She was baptised on 5 January 1834 in Linton. She died in January 1861 (estimated) in Linton. She was buried on 31 January 1861 in Linton.*
- +32 George COTTAGE (b.1836, bur.1837)

15. **Stephen COTTAGE**, son of Isaac COTTAGE and Grace WAKELING, was born on 16 February 1802 in Linton. He was baptised on 25 April 1802 in Linton. He was a Gamekeeper. He and **Jemima Bye COTTAGE** had marriage banns published on 29 July 1821 in Linton. He died on 1 March 1881 in Linton aged 79. He was buried on 4 March 1881 in Linton.

Jemima Bye COTTAGE, daughter of CASBOLT (-), was born in 1802 (calculated). She died on 2 September 1877 (estimated) in Linton. She was buried on 14 September 1877 in Linton. She and Stephen COTTAGE had the following children:

- +33 Sarah COTTAGE (1826-)
- 34 Eliza COTTAGE (1822-1847). *Eliza was born on 7 June 1822 in Linton. She was baptised on 4 August 1822 in Linton. She died in November 1847 in Linton. She was buried on 26 November 1847 in Linton.*
- +35 Charles COTTAGE (1823-)
- 36 Mary Ann Bye COTTAGE (1825-). *Mary was born on 28 January 1825 in Linton. She was baptised on 2 April 1825 in Linton.*
- 37 Stephen COTTAGE (1829-). *Stephen was born on 12 July 1829. He was baptised on 1 August 1829 in Linton.*
- +38 Susannah COTTAGE (1831-)
- 39 William COTTAGE (1831-). *William was born on 7 December 1831. He was baptised on 28 October 1832 in Linton.*
- +40 Phebe COTTAGE (1834-1834)
- +41 Joseph John COTTAGE (1834-1891?)
- 42 Mabel COTTAGE (1840-). *Mabel was born on 9 August 1840 in Linton. She was baptised on 11 October 1840 in Linton.*
- +43 Isabel COTTAGE (c. 1830-)

16. **George COTTAGE**, son of Isaac COTTAGE and Grace WAKELING, was born on 12 May 1804 in Linton. He was baptised on 10 June 1804 in Linton. He was a Labourer. He married **Sarah KIDMAN** on 25 December 1840 in Linton. He died in July 1852 in Linton. He was buried on 5 August 1852 in Linton aged 48.

Sarah KIDMAN and George COTTAGE had the following children:

- +44 James COTTAGE (1841-)
- 45 Betsy COTTAGE (1843-). *Betsy was born on 7 April 1843 in Linton. She was baptised on 6 August 1843 in Linton.*

Eighth Generation

18. **William COTTAGE**, son of John COTTAGE and Mary COWLING, was born on 12 April 1805 in Linton, Cambridgeshire. He was baptised on 12 May 1805 in Linton. He and **Rebecca HAYWARD** had marriage banns published on 27 May 1826 in Linton. He married her on 4 June 1827 in West Wrating, Cambridgeshire. He died of Unknown in May 1831 in Linton. He was buried on 22 May 1831 in Linton aged 26.

Rebecca HAYWARD married on 9 September 1831 in Linton. She and William COTTAGE had the following children:

+46 William COTTAGE (bef1831-1831?)

19. **John COTTAGE**, son of John COTTAGE and Mary COWLING, was born on 9 April 1810 in Linton. He was baptised on 27 May 1810. He and **Rebecca MYSON** had marriage banns published on 25 January 1829 in Linton. On 31 January 1829 he was a Publican aged 18. He married Rebecca MYSON on 31 January 1829 in Linton when he was 18. On 24 August 1834 he was a Labourer. He is recorded in the census in 1841 in Linton. He and **Martha STRANGE** had marriage banns published on 27 March 1842 in Linton. He married her on 9 April 1842 in Linton when he was 32. In 1851 he was a Labourer in Linton aged 40. He is recorded in the census in 1851 in Linton. In 1861 he was a Beer House Keeper in Linton. He died on 25 July 1868 in Linton. He was buried on 25 July 1868 in Linton aged 58.

Rebecca MYSON, daughter of John MIZEN (-) and Ann FISHER (c. 1759-1839), was born on 15 May 1809 in Horseheath, Cambridgeshire. She was baptised on 30 November 1809. She died in December 1840 (estimated) in Linton. She was buried on 22 December 1840 in Linton aged 31. She and John COTTAGE had the following children:

- 47 George COTTAGE (bef1829-1829?). *George was born before 23 May 1829 in Linton. He was baptised on 19 July 1829 in Linton. He died of Unknown in July 1829 (estimated) in Linton. He was buried on 5 August 1829 in Linton.*
- +48 Mary COTTAGE (1830-1887)
- +49 Rebecca COTTAGE (1832-1878)
- +50 Sarah COTTAGE (1834-1876)
- 51 George COTTAGE (-)

Martha STRANGE, daughter of John STRANGE (1789-1860) and Mary SEARLE (1795-), was born on 4 March 1818 (calculated) in Linton. She was baptised on 19 July 1818 in Linton. In 1841 she was a Housekeeper. She is recorded in the census in 1841 in Linton. She died before 18 July 1872 in Linton. She and John COTTAGE had the following children:

- +52 Lydia COTTAGE (1842-)
- 53 William COTTAGE (1844-c. 1849). *William was born on 29 June 1844 in Linton. He was baptised on 28 July 1844 in Linton. He died circa February 1849. He was buried on 3 March 1849 in Linton.*

20. **Mary Anne COTTAGE**, daughter of John COTTAGE and Mary COWLING, was born on 2 March 1813 in Linton. She was baptised on 16 April 1813 in Linton. She married **Thomas COCK** on 9 February 1833 in Linton.

22. **John COTTAGE**, son of John COTTAGE and Elizabeth CARTWRIGHT, was born on 17 September 1816. He was baptised on 2 February 1817 in Linton. He married **Mary FRENCH** on 11 February 1837 in Linton.

Mary FRENCH was born before 1820.

24. **Isaac COTTAGE**, daughter of David COTTAGE and Ann HILLS, was born on 13 April 1823 in Linton. She was baptised on 3 August 1823 in Linton. She was a Labourer. She married **Eliza MANSFIELD** on 3 December 1843 in Linton.

Eliza MANSFIELD, daughter of Thomas MANSFIELD (-), was born after 1823. She was a Labourer. She and Isaac COTTAGE had the following children:

- +54 David COTTAGE (bef1846-)
- +55 Emma COTTAGE (1849?-)
- +56 Isaac COTTAGE (1852?-)

25. **Grace COTTAGE**, daughter of David COTTAGE and Ann HILLS, was born circa 1818 in Linton. She married **James PORTER** on 14 January 1844 in Linton.

29. **David COTTAGE**, son of David COTTAGE and Ann HILLS, was born on 3 February 1830. He was baptised on 25 April 1830 in Linton. He was a Labourer. He married **Ann(e)** before 19 September 1853 in Linton.

Ann(e) was born before 1837 in Islington, London. She and David COTTAGE had the following children:

- 57 George DAVID (bef1853-). *George was born before 19 September 1853 in Linton. He was baptised on 19 September 1853 in Linton.*

+58 William COTTAGE (bef1858-)

32. **George COTTAGE**, son of David COTTAGE and Ann HILLS, was born on 14 July 1836 in Linton. He was baptised on 7 August 1836 in Linton. He was buried on 12 November 1837 in Linton. He married **Mary SALMON** before March 1852.

CD/PR/04a Linton_Baptisms_1800_1867 p183.

Mary SALMON was born before 1832. She and George COTTAGE had the following children:

- 59 George COTTAGE (1853?-1870?). *George was born in November 1853 (calculated) in Linton. He/she was baptised on 13 December 1853 in Linton. He/she died in May 1870 (estimated). He/she was buried on 25 May 1870 in Linton.*

33. **Sarah COTTAGE**, daughter of Stephen COTTAGE and Jemima Bye COTTAGE, was born on 17 August 1826 in Linton. She was baptised on 24 September 1826 in Linton. She married **George COTTAGE** on 30 July 1845 in Linton.

George COTTAGE was born in 1824 (calculated). He was a Farmer. He and Sarah COTTAGE had the following children:

- 60 Eliza COTTAGE (bef1845-1875?). *Eliza was born before 27 April 1845. She was baptised on 27 April 1845 in Linton. She died of Not Known in April 1875 (estimated) in Linton.*

35. **Charles COTTAGE**, son of Stephen COTTAGE and Jemima Bye COTTAGE, was born on 21 September 1823 in Linton. He was baptised on 21 September 1823 in Linton. He was a Gamekeeper. He married **Jessie ANN** in 1845 (estimated).

Jessie ANN was born in Whittlesford. She and Charles COTTAGE had the following children:

- +61 John Charles Crane COTTAGE (bef1845-)
+62 Frederick Stephen COTTAGE (bef1848-)

38. **Susannah COTTAGE**, daughter of Stephen COTTAGE and Jemima Bye COTTAGE, was born on 5 April 1831 in Linton. She was baptised on 5 June 1831 in Linton. She married **Robert PAMMENT** in 1852 (calculated).

Robert PAMMENT was born in Finchingfield. He was a Labourer. He and Susannah COTTAGE had the following children:

- 63 Elizabeth Cottage PAMMENT (bef1853-). *Elizabeth was born before May 1853 in Linton. She was baptised on 29 May 1853 in Linton.*

40. **Phebe COTTAGE**, daughter of Stephen COTTAGE and Jemima Bye COTTAGE, was born on 21 January 1834 in Linton. She was baptised on 13 April 1834 in Linton. She died on 13 April 1834. She married **Thomas FORDHAM**.

41. **Joseph John COTTAGE**, son of Stephen COTTAGE and Jemima Bye COTTAGE, was born on 1 June 1834 in Linton. He was baptised on 2 August 1834 in Linton. He married **Elizabeth CASBOLT** before 10 December 1857. On 2 August 1858 he was a Gamekeeper in Linton. He married **Ellen** before 1870. He died of NK in April 1891 (calculated) in Linton. He was buried on 1 May 1891 (calculated) in Linton.

Elizabeth CASBOLT and Joseph John COTTAGE had the following children:

- 64 Stephen COTTAGE (bef1858-). *Stephen was born before 1 August 1858 in Linton. He was baptised on 2 August 1858 in Linton.*
65 Walter COTTAGE (1860?-1860?). *Walter was born in June 1860 (calculated). He was baptised on 29 August 1860 in Linton. He died in August 1860 (calculated) in Linton. He was buried on 5 September 1860 in Linton.*
66 Elizabeth Annie COTTAGE (1873?-). *Elizabeth was born in October 1873 (estimated) in Linton. She was baptised on 30 November 1873 in Linton.*
67 Frederick Joseph COTTAGE (1874?-). *Frederick was born in December 1874 (estimated) in Linton. He was baptised on 10 January 1875 in Linton.*

Ellen was born in 1835. She and Joseph John COTTAGE had the following children:

- 68 Rosina Jemima COTTAGE (1869?-). *Rosina was born in December 1869 (estimated) in Linton. She was baptised on 30 January 1870 in Linton.*
- 69 Isabel Kate COTTAGE (1871?-). *Isabel was born on 25 May 1871 (estimated) in Linton. She was baptised on 25 June 1871 in Linton.*
- 70 Eliza Ann COTTAGE (1877?-). *Eliza was born in February 1877 (estimated) in Linton. She was baptised on 1 April 1877 in Linton.*

43. **Isabel COTTAGE**, daughter of Stephen COTTAGE and Jemima Bye COTTAGE, was born circa 1830. She married **George Harding MEEKS** on 22 May 1862 in Linton.

George Harding MEEKS was a Wheelwright.

44. **James COTTAGE**, son of George COTTAGE and Sarah KIDMAN, was born on 26 August 1841 in Linton. He was baptised on 25 December 1841 in Linton.

CD/PR/04a LINTON Baptisms 1800 p190.

Ninth Generation

46. **William COTTAGE**, son of William COTTAGE and Rebecca HAYWARD, was born before 26 January 1831 in Linton, Cambridgeshire. He was baptised on 26 January 1831 in Linton. He was a Carpenter. He died of Unknown in January 1831 (estimated) in Linton. He married **Mary** before 16 February 1854 in Linton.

Mary was born in London. She and William COTTAGE had the following children:

- 71 Alica ANN Cottage (bef1853-). *Alica was born before 16 February 1853 in Linton. She was baptised on 16 February 1853 in Linton.*

48. **Mary COTTAGE**, daughter of John COTTAGE and Rebecca MYSON, was born on 17 August 1830 in Linton. She was baptised on 29 August 1830 in Linton. She and **Isaac STRANGE** are recorded in the census in 1841 in Church of the Holy Sepulchre, Linton when he was 45. She is recorded in the census in 1851 in Cambridge, St Clement. She is recorded in the census in 1861 in Hackney, Middlesex aged 30. In 1861 she was a Servant - Housemaid in Hackney aged 30. She married Isaac STRANGE on 6 January 1862 in St John, Hackney, Middlesex. They are recorded in the census in 1871 in Chesterton, Cambridge when he was 40. They are recorded in the census in 1881 in Chesterton when he was 51. She is recorded in the 1881 Census in Chesterton. She died on 5 April 1887 in Strange Villa, Chesterton Road, Chesterton.

Isaac STRANGE, son of John STRANGE (1789-1860) and Mary SEARLE (1795-), was born on 25 April 1830 (calculated) in Linton. He was baptised on 26 September 1830 in Linton Independent. He is recorded in the 1841 Census in Linton Hundred:- Chilford. He is recorded in the census in 1851 in Cambridge, Holy Sepulchre aged 21. He married Sarah IRELAND in 1853 in St Sepulchre's, Cambridge. He is recorded in the census in 1861 in Cambridge, St Peter aged 21. In 1865 he lived in 4 Fishers Lane, Chesterton, Cambridge. He was baptised on 6 January 1867 in St Andrew, Chesterton. On 6 January 1867 he was a Master Boat Builder/College Servant in St Andrew. He is recorded in the census in 1871. In 1875 he lived in Cambridge. In 1875 he lived in Cambridge. He died of Stroke on 9 March 1897 in Strange Villa. He had his estate probated on 7 July 1897 in Peterborough. He and Mary COTTAGE had the following children:

- +72 John Cottage Ireland STRANGE (1862-1902)
- +73 Rosalie Ellen STRANGE (1863-1953)
- 74 Annie Rebecca STRANGE (1865-). *Annie was born in 1865 in Chesterton. She was baptised on 27 January 1867 in St Andrew. She is recorded in the census in 1871 in Cambridgeshire. She is recorded in the 1881 Census in Chesterton.*
- +75 Mary Jesoline STRANGE (1866-)
- +76 Claudine Sarah STRANGE (1870-c. 1964)
- +77 Lydia Annie STRANGE (1871-)
- 78 William Vickers STRANGE (1868?-). *William was born in September 1868 (estimated) in St Andrew. He was baptised on 11 October 1868 in St Andrew.*
- 79 Isaac Arthur STRANGE (1874?-). *Isaac was born in February 1874 (calculated) in Midsummer Common, Cambridge. He was born in June 1874 (estimated) in Chesterton. He was baptised on 5 July 1874 in St Andrew. He was baptised on 5 July 1874 in St Luke, Chesterton.*

49. **Rebecca COTTAGE**, daughter of John COTTAGE and Rebecca MYSON, was born on 23 October 1832 in Linton. She was baptised on 6 January 1833 in Linton. She is recorded in the census in 1841 in Linton. She married **Henry BUTTERY** on 11 February 1860 in Haggerston, Middlesex. She died in 1878 in Cambridgeshire.

Henry BUTTERY, son of Richard BUTTERY (-) and Susannah BERRIDGE (-), was born in 1832 in Hackney. He died before 31 January 1893. He and Rebecca COTTAGE had the following children:

- +80 Mary Rebecca BUTTERY (1865-1920)
- +81 Harry Cottage BUTTERY (1867-1942)
- 82 Minnie Sarah BUTTERY (1869-). *Minnie was born in 1869 in Wandsworth, Greater London.*
- 83 Frank Benjamin BUTTERY (1872-). *Frank was born in 1872 in Cambridgeshire.*
- 84 Elsie Herridge BUTTERY (1876-). *Elsie was born in 1876 in Cambridgeshire.*

50. **Sarah COTTAGE**, daughter of John COTTAGE and Rebecca MYSON, was born on 5 August 1834 in Linton. She was baptised on 24 August 1834 in Linton. She is recorded in the census in 1841 in Linton. She married on 30 July 1845. She married **George HILL** on 20 May 1854 in Linton. She died on 4 February 1876 in Linton.

George HILL (also known as Hills), son of Thomas HILLS and Susannah BROWN (-), was born on 30 June 1828 in Linton. He died on 13 April 1878 in Linton. He and Sarah COTTAGE had the following children:

- 85 Martha Rebecca HILL (1854-c. 1889). *Martha was born on 23 June 1854 in Linton. She died circa 1889.*
- +86 Eliza HILL (1856-1941)
- +87 William HILL (1858-1943)
- +88 George HILL (1860-1929)
- +89 Arthur HILL (1862-bef1933)
- 90 Alice HILL (1865-c. 1935). *Alice was born on 9 February 1865 in Linton. She died circa 1935 in Linton.*
- 91 Emma HILL (1867-1951). *Emma was born on 4 February 1867 in Linton. She died on 10 October 1951 in Linton.*
- +92 Rowland HILL (1869-1951)
- +93 Harry Cottage HILL (1871-1955)
- 94 Rebecca HILL (1872-bef1951). *Rebecca was born on 7 December 1872 in Linton. She died before 1951.*
- +95 Ellen HILL (1875-aft1951)

52. **Lydia COTTAGE**, daughter of John COTTAGE and Martha STRANGE, was born on 10 July 1842 in Linton. She was baptised on 31 July 1842 in Linton. She and **Robert DENNIS** had marriage banns published on 30 October 1859 in Linton. She married him on 5 November 1859 in Linton.

Robert DENNIS was born in 1840 in Fordham, Cambridgeshire. On 16 March 1862 he was a Gardener in Linton. He was a Baker. He died in 1891 in Gravesend, Kent. He and Lydia COTTAGE had the following children:

- +96 Edward Cottage DENNIS (1860-1919)
- 97 John William Cottage DENNIS (1862-). *John was born in 1862 in Linton. He was baptised on 16 March 1862 in Linton.*
- 98 Arthur Durrant Cottage DENNIS (1865-). *Arthur was born in 1865 in Northfleet, Kent. He died.*
- +99 Alfred Strange Cottage DENNIS (1867-1936)
- 100 Robert Stanley DENNIS (1870-). *Robert was born in 1870 in Gravesend.*
- 101 Lydia Cottage DENNIS (1871-1942). *Lydia was born in 1871 in Gravesend. She died in 1942 in Dartford, Kent.*
- 102 Frederick Strange DENNIS (1873-). *Frederick was born in 1873 in Gravesend.*
- +103 Annie Cottage DENNIS (1877-)
- 104 Jessie Annie DENNIS (1881-1881). *Jessie was born in 1881 in Gravesend. She died in 1881 in Gravesend.*

54. **David COTTAGE**, son of Isaac COTTAGE, was born before December 1846 in Linton. He was baptised on 26 December 1846 in Linton. He was baptised on 25 July 1847 in Linton.

Linton_Baptisms_1800_1867 p 197.

55. **Emma COTTAGE**, daughter of Isaac COTTAGE, was born on 29 May 1849 (calculated) in Linton. She was baptised on 29 May 1849 in Linton. She was baptised on 24 February 1850 in Linton.

Linton_Baptisms_1800_1867 p 200.

56. **Isaac COTTAGE**, son of Isaac COTTAGE, was born on 5 February 1852 (calculated) in Linton. He was baptised on 29 February 1852 in Linton.

Linton_Baptisms_1800_1867 p 204.

58. **William COTTAGE**, child of David COTTAGE and Ann(e), was born before 3 July 1858 in Linton. He/she was baptised on 3 July 1858 in Linton.

Address at Jul 3 1858 shown as Suffolk Place, Stoke Newington. Source - CD/PR/04a LINTON Baptisms 1800 p 212.

61. **John Charles Crane COTTAGE**, son of Charles COTTAGE and Jessie ANN, was born before 29 March 1845. He was baptised on 29 March 1846 in Linton.

? Linton_Baptisms_1800_1867 p 196.

62. **Frederick Stephen COTTAGE**, son of Charles COTTAGE and Jessie ANN, was born before December 1848 in Linton. He was baptised on 31 December 1848 in Linton.

Linton_Baptisms_1800_1867 p 200.

Tenth Generation

72. **John Cottage Ireland STRANGE**, son of Isaac STRANGE and Mary COTTAGE, was born on 11 November 1862 in Chesterton, Cambridge. He was a Boat Builder. He is recorded in the census in 1871 in Chesterton aged 8. He is recorded in the 1881 Census in Chesterton. He is recorded in the census in 1891 in Cambridgeshire. He is recorded in the census in 1901 in Cambridgeshire. He married **Louisa ANNIE** in Cambridge. He died in April 1902 in Cambridge.

Inherited the family business eventually. His name can be seen clearly on an old photograph of the Strange boathouse. The original resides in the Cambridgeshire Collection.

Louisa ANNIE (also known as Laura ANNIE) was born in 1868. She is recorded in the census in 1891 in St Luke, Chesterton aged 23. She and John Cottage Ireland STRANGE had the following children:

- | | |
|-----|--|
| 105 | John Cottage Isaac STRANGE (1891-). <i>John was born on 26 July 1891. He was baptised on 28 May 1893 in St Luke.</i> |
| 106 | Mary Gwendoline STRANGE (1893-). <i>Mary was born on 11 April 1893 in Chesterton. She was baptised on 28 May 1893 in St Luke.</i> |
| 107 | Donald Percival STRANGE (1895-). <i>Donald was born on 24 May 1895 in Chesterton. He was baptised on 19 June 1895 in St Luke.</i> |

73. **Rosalie Ellen STRANGE**, daughter of Isaac STRANGE and Mary COTTAGE, was born on 23 December 1863 in 4 Fishers Lane, Chesterton, Cambridge. She is recorded in the census in 1871 in Chesterton aged 7. She is recorded in the 1881 Census in Chesterton. She married **Henry HARVEY** in 1884 (estimated). She married **Frank ELLWOOD** on 3 June 1889 in Chesterton. They are recorded in the census in 1891 in Chesterton when he was 27. She is recorded in the census in 1901 in Chesterton. She married in April 1909 in Cambridge. She is recorded in the census in 1911 in London. She married Henry HARVEY. She married **Walter Martin POMPHRETT** on 4 October 1914 in Poplar, London. She died on 23 October 1953 in Yarmouth, Norfolk.

Frank ELLWOOD, son of Richard ELLWOOD (-) and Eliza WELLS (-), was born on 3 December 1861 in Cambridgeshire. He was a College Servant. He died on 5 November 1897 in 7, Alpha Road, Chesterton, Cambridge. He and Rosalie Ellen STRANGE had the following children:

- | | |
|-----|--|
| 108 | William ELLWOOD Strange (aft1887-1958). <i>William was born between 1887 and 1888 in Edmonton, Middlesex. He died in 1958 in Yarmouth.</i> |
| 109 | Mary Winifred ELLWOOD (1890-). <i>Mary was born on 6 January 1890 in Milton,</i> |

110 *Cambridgeshire. She is recorded in the census in 1901 in Chesterton aged 11.*
 Reginald Frank ELLWOOD (c. 1893-). *Reginald was born circa 1893 in Chesterton.*

75. **Mary Jesoline STRANGE** (known as 'Madge', and also as Mary Justine STRANGE), daughter of Isaac STRANGE and Mary COTTAGE, was born in October 1866 in Chesterton. She was baptised on 6 January 1867 in St Andrew, Chesterton. She is recorded in the census in 1871 in Chesterton aged 4. She is recorded in the 1881 Census in Chesterton. She is recorded in the census in 1891 in Cambridgeshire. She was baptised in 1904 in St Clements, Cambridge.

She was always known as Madge.



Claudine Sarah STRANGE, Claudine Gray in her 80s



Spouse: Percy William " Bill" GRAY, Percy W Gray

76. **Claudine Sarah STRANGE**, daughter of Isaac STRANGE and Mary COTTAGE, was born between January 1870 and 1 July 1870 in Chesterton. She was baptised on 17 July 1870 in St Andrew. She is recorded in the census in 1871 in Chesterton aged 11 months. She was recorded in the 1881 Census in Chesterton. She and **Percy William " Bill" GRAY** had marriage banns published on 1 August 1897 in St Luke. On 1 September 1897 she lived in Chesterton Road, Cambridge. She married Percy William " Bill" GRAY on 1 September 1897 in St Luke. She is recorded in the census in 1901 in Cambridge aged 30. She is recorded in the census in 1901 in Cambridge aged 30. She is recorded in the census in 1911 in Cambridge. In 1918 she lived in Cambridge. In 1938 (estimated) she lived in Cambridge. In 1947 she lived in Cambridge. In 1950 (estimated) she lived in Hindhead, Surrey. She died circa September 1964 in Cambridge aged 94. She had her estate probated in 1964.

Percy William " Bill" GRAY, son of Charles Edward GRAY (1835-1917) and Harriet Deen PRYOR (1839-1921), was born on 21 September 1871 in Cambridge. He was baptised on 15 October 1871 in St Andrew the Great, Cambridge. He was a Chartered Surveyor/Auctioneer. He experienced 1881 Census on 3 April 1881 in St Andrew the Less, Cambridge. He experienced 1891 Census in 1891 in St Andrew the Less. On 1 September 1897 he lived in Cambridge. He lived in Penwith, Hills Road, Cambridge. He is recorded in the census in 1901 in Cambridge aged 29. He is recorded in the census in 1901 in Cambridge. He is recorded in the census on 2 April 1911 in Cambridge. He died on 18 April 1937 in Great Shelford, Cambridge aged 65. He had his estate probated on 25 June 1937 aged 65. He and Claudine Sarah STRANGE had the following children:

- +111 Philippa Nellie GRAY (1898-1990)
- +112 Marguerite GRAY (1900-1986)
- +113 Percy Charles GRAY (1908-1996)

77. **Lydia Annie STRANGE**, daughter of Isaac STRANGE and Mary COTTAGE, was born in July 1871 in Chesterton. She was baptised on 5 November 1871 in St Luke. She is recorded in the 1881 Census in Chesterton. She is recorded in the census in 1891 in Cambridgeshire. She married **Matthew STRONG** between 1891 and 1901. She is recorded in the census in 1901 in Lancashire.

80. **Mary Rebecca BUTTERY**, daughter of Henry BUTTERY and Rebecca COTTAGE, was born in 1865 in Lambeth District, London. She married **John CAMPHAUSEN-BEYERS** in 1906 in Lambeth District. She died in 1920 in Liverpool, Lancashire.

81. **Harry Cottage BUTTERY**, son of Henry BUTTERY and Rebecca COTTAGE, was born in 1867 in Wandsworth, Greater London. He married **Rosina RYDER** circa 1887 in Charlton, Lancashire. He died in 1942 in Hyde, Cheshire.

Rosina RYDER was born in 1864 in Levershulme, Lancashire. She died in 1955 in Ashton, Lancashire. She and Harry Cottage BUTTERY had the following children:

- 114 Rosina Ethel BUTTERY (1887-1976). *Rosina was born in 1887 in Levershulme. She died in 1976 in High Peak, Derbyshire.*
- 115 Emma Rebecca BUTTERY (1889-1965). *Emma was born in 1889 in Stockport, Cheshire. She died in 1965 in Ashton.*
- 116 Minnie Annis BUTTERY (1898-1951). *Minnie was born in 1898 in Ashton. She died in 1951 in Hyde.*

86. **Eliza HILL**, daughter of George HILL and Sarah COTTAGE, was born on 21 June 1856 in Linton, Cambridgeshire. She married **Arthur John HILL** on 25 September 1881 in Linton. She married **Edward MORLEY** on 26 April 1902 in Linton. She died in 1941 in Saffron Walden, Essex.

Arthur John HILL, son of Benjamin HILLS (-) and Jane BUSH (-), was born before 31 July 1859 in Linton. He died in 1895 in Linton. He and Eliza HILL had the following children:

- 117 Kate Mary HILL (bef1882-). *Kate was born before 2 July 1882 in Linton.*
- 118 Ethel HILL (bef1883-). *Ethel was born before 7 October 1883 in Linton.*
- 119 Rosalie HILL (bef1885-). *Rosalie was born before 5 April 1885 in Hadstock, Essex.*
- 120 Sarah Jane HILL (bef1888-). *Sarah was born before 3 June 1888 in Hadstock.*
- 121 Ernest Arthur HILL (bef1891-). *Ernest was born before 1 February 1891.*
- 122 Elizabeth Alice HILL (bef1893-) (known as 'Lizzie'). *Lizzie was born before 7 May 1893 in Hadstock.*

Edward MORLEY, son of George MORLEY (-), was born circa 1859 in Abington, Cambridgeshire.

87. **William HILL**, son of George HILL and Sarah COTTAGE, was born on 30 September 1858 in Linton. He married **Jane PAGE** on 10 July 1880 in Linton. He died in March 1943 in England.

Jane PAGE was born circa 1849 in Horseheath, Cambridgeshire. She died before 1951. She and William HILL had the following children:

- 123 Edith Mary HILL (bef1882-). *Edith was born before 7 May 1882 in Linton.*
- 124 Robert John HILL (bef1884-). *Robert was born before 15 February 1884 in Linton.*
- 125 Alice Maud HILL (bef1885-). *Alice was born before 23 October 1885 in Linton.*
- 126 Ellen Rebecca HILL (bef1887-). *Ellen was born before 22 April 1887 in Linton.*
- 127 Betsie HILL (1889-). *Betsie was born in 1889 in Linton.*
- 128 Florrie HILL (1890-). *Florrie was born in 1890 in Linton.*

88. **George HILL**, son of George HILL and Sarah COTTAGE, was born on 28 August 1860 in Linton. He married **Ellen HILL** on 21 April 1889 in Linton. He died in 1929.

Ellen HILL, daughter of John HILLS (-) and Mary HILLS (-), was born before 6 February 1863 in Linton. She died before 22 July 1943 in Linton. She and George HILL had the following children:

- 129 Alice Eliza HILL (bef1889-). *Alice was born before 4 August 1889 in Linton.*
- 130 Harry George HILL (bef1891-). *Harry was born before 28 April 1891 in Linton.*
- 131 William HILL (bef1894-). *William was born before 5 August 1894 in Linton.*
- 132 Frederick HILL (bef1896-1896). *Frederick was born before 24 November 1896 in Linton. He died in November 1896 in Linton.*
- 133 Frederick George HILL (bef1898-). *Frederick was born before 3 April 1898 in Linton.*
- 134 Florence May HILL (bef1900-). *Florence was born before 24 August 1900 in Hadstock.*

89. **Arthur HILL**, son of George HILL and Sarah COTTAGE, was born on 7 December 1862 in Linton. He married **Rowena Harriet CUTTER** on 16 October 1886 in Linton. He died before 26 October 1933 in Linton.

Rowena Harriet CUTTER was born before October 1867 in Hadstock. She died before 12 August 1941 in Linton. She and Arthur HILL had the following children:

- 135 Olive Ellen HILL (bef1887-1964). *Olive was born before June 1887 in Linton. She died in 1964 in Cambridge.*

- 136 Mabel May HILL (bef1893-). *Mabel was born before 12 March 1893 in Linton.*
- 137 Arthur Stanley HILL (bef1893-). *Arthur was born before 5 March 1893 in Linton.*
- 138 Bertha Lilian HILL (bef1895-). *Bertha was born before 7 July 1895 in Linton.*
- +139 Charles George HILL (1898-1920)
- +140 Constance Rowena HILL (1902-1974)
- 141 Percy Dennis HILL (1907-1945). *Percy was born on 1 February 1907 in Linton. He died in 1945 in Linton.*

92. **Rowland HILL**, son of George HILL and Sarah COTTAGE, was born on 6 March 1869 in Linton. He married **Julia Selina HYSLOP** on 14 September 1893 in Islington, London. He married **Lucy Harriet ROSE** on 12 January 1906 in Crediton, Devon. He died on 16 April 1951 in St Catharines, Lincoln, Ontario, Canada.

Lucy Harriet ROSE, daughter of Alexander ROSE (-) and Rosa SELLICK (-), was born on 17 April 1883 in Aylsbeare, Devon. She died on 18 December 1961 in St Catharines. She and Rowland HILL had the following children:

- +142 Agnes HILL (-)

Julia Selina HYSLOP, daughter of William HYSLOP (-), was born before December 1866 in Winterton, Norfolk. She died before June 1902 in Lambeth District.

93. **Harry Cottage HILL**, son of George HILL and Sarah COTTAGE, was born on 3 February 1871 in Linton. He married **Edith Maria SMALLRIDGE** in 1899 in Kensington, London. He died in 1955 in Sidmouth, Devon.

Edith Maria SMALLRIDGE was born in 1878 in Sidmouth. She died in 1939 in Sidmouth. She and Harry Cottage HILL had the following children:

- 143 Francis Harry HILL (1900-bef1945) (known as 'Frank'). *Frank was born on 19 March 1900 in Kensington. He died between 1939 and 1945.*
- 144 Hilda Mary HILL (1904-1994). *Hilda was born on 30 September 1904 in Sidmouth. She died on 24 September 1994 in Sidmouth.*
- 145 Rowland John HILL (1909-1992) (known as 'Jack'). *Jack was born on 19 March 1909 in Honiton, Devon. He died in 1992 in Watford, Hertfordshire.*
- 146 Harry James HILL (1915-1993) (known as 'Jim'). *Jim was born on 7 January 1915 in Sidmouth. He died on 26 October 1993 in Exeter, Devon.*

95. **Ellen HILL** (known as 'Nellie'), daughter of George HILL and Sarah COTTAGE, was born on 26 January 1875 in Linton. She married **John William GEORGE** in 1905 in St Alban's, Hertfordshire. She died after 1951.

John William GEORGE and Ellen HILL had the following children:

- 147 Kathleen Ellen GEORGE (1905-1969) (known as 'Kathy'). *Kathy was born on 2 July 1905 in St Alban's. She died in 1969 in Watford.*
- 148 Ivy Grace GEORGE (1910-2000). *Ivy was born in 1910 in St Alban's. She died in 2000 in Watford.*

96. **Edward Cottage DENNIS**, son of Robert DENNIS and Lydia COTTAGE, was born in 1860 in Linton. He married **Alice Mabel BUTTERY** in 1883 in Croydon, London. He died in 1919 in Gravesend, Kent.

Alice Mabel BUTTERY was the daughter of Alfred Henry W. DENNIS (1899-1958). She and Edward Cottage DENNIS had the following children:

- 149 Edward Henry R. DENNIS (1884-). *Edward was born in 1884 in Gravesend.*
- 150 Harry Frank DENNIS (1888-). *Harry was born in 1888 in Gravesend.*

99. **Alfred Strange Cottage DENNIS**, son of Robert DENNIS and Lydia COTTAGE, was born on 2 October 1867 in Gravesend. He married **Francis Isobel CACKETT** on 16 March 1898 in Gravesend. He died on 28 May 1936 in Gravesend.

Francis Isobel CACKETT was born on 29 October 1880 in Gravesend. She died in August 1963. She and Alfred Strange Cottage DENNIS had the following children:

- 151 Winifred Frances E. DENNIS (1898-). *Winifred was born on 16 June 1898 in Gravesend.*
- +152 Alfred Henry W. DENNIS (1899-1958)
- 153 Stanley Frederick W. DENNIS (1901-). *Stanley was born in 1901 in Gravesend. He died in Australia.*
- +154 Ellen DENNIS (1905-1995)
- +155 William Frederick DENNIS (1907-1985)
- +156 Arthur Victor DENNIS (1910-1950)
- 157 Albert Ernest DENNIS (1912-). *Albert was born in 1912 in Gravesend. He died.*
- 158 Harry DENNIS (-). *Harry was born in Gravesend.*
- 159 Ronald C. DENNIS (1920-1920). *Ronald was born in 1920 in Gravesend. He died in 1920 in Gravesend.*
- 160 Violet Jessie DENNIS (1916-1997). *Violet was born on 13 March 1916 in Gravesend. She died in 1997 in York, Yorkshire.*
- 161 Herbert Roy DENNIS (1918-aft2005). *Herbert was born in 1918 in Gravesend. He died after 2005.*
- 162 Hilda Joan DENNIS (1925-2001). *Hilda was born on 16 March 1925 in Gravesend. She died in 2001 in Gravesend.*

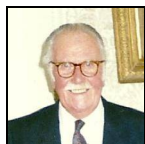
103. **Annie Cottage DENNIS**, daughter of Robert DENNIS and Lydia COTTAGE, was born in 1877 in Gravesend. She married **Francis Rigby HILL** in 1900 in Gravesend.

Francis Rigby HILL (known as 'Frank') was born in 1900 in Gravesend.

Eleventh Generation



Philippa Nellie GRAY, Philippa Gray



Spouse: Douglas WHITE

111. **Philippa Nellie GRAY**, daughter of Percy William " Bill" GRAY and Claudine Sarah STRANGE, was born on 2 July 1898 in Cambridge. She was baptised on 9 August 1898 in St Luke, Chesterton. "1922-28" she was a Radiologist. She is recorded in the census in 1901 in Cambridge aged 2. She is recorded in the census in 1911 in Cambridge. She and **Eric Lankester VAUS** had marriage banns published on 10 April 1921 in St Andrew the Great, Cambridge. She married him on 22 April 1921 in Cambridge. She is recorded in the census in 1925 in Epsom, Surrey. She is recorded in the census in 1933 in Holborn, London. She married **James O'HARA** in April 1934. She married **Douglas WHITE** in June 1950 in Kensington, London. She died in July 1990 in Swallowfield Park, Reading, Berkshire.

Philippa was a radiologist in the 1920s, (Thought by the family to be involved in the development of the science) and wrote a book - " The anatomy of the leg and foot".

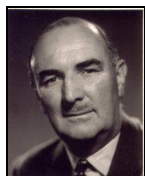
Eric Lankester VAUS, son of Frank Harry VAUS (-) and Lillie Bessie Mary ? (-), was born in 1895 in Camberwell, London. He was baptised on 30 June 1895 in St John the Evangelist, East Dulwich. He is recorded in the census in 1911 in London. He experienced Military in 1918 (estimated). He appeared on the Electoral Roll in 1925 in Surrey. He was a Process engraver. He died in 1980 in Devon.

Douglas WHITE was born on 22 March 1905 in Rochford, Essex. He is recorded in the census in 1911 (estimated). He appeared on the Electoral Roll in 1927. He married Monica F ROBERTS before September 1940 in Derbyshire. He was educated at Great Britain, Royal Aero Club Aviators' Certificates, 1910-1950 - Schools, Directories & Church Histories on 28 November 1958. He died on 13 November 1992 in Swallowfield Park aged 72.

112. **Marguerite GRAY**, daughter of Percy William " Bill" GRAY and Claudine Sarah STRANGE, was born on 29 October 1900 in Cambridge. She is recorded in the census in 1901 in Cambridge aged 5. She is recorded in the census in 1911 in Cambridge. She married **Laurence Edward BISHOP** on 29 November 1923 in Cambridge. She died on 29 October 1986 in Cambridge aged 86.

She spent much of her married life in India.

Laurence Edward BISHOP (known as 'Laurie') was born on 3 June 1896. He was a Regular Army Officer. He died of a car accident in 1971 in Cambridge.



Percy Charles GRAY, c. 1950, age 42, Percy Gray



Spouse: Doris Maie "Jill" ROBERTS

113. **Percy Charles GRAY** (known as 'Bill'), son of Percy William " Bill" GRAY and Claudine Sarah STRANGE, was born on 16 September 1908 in Cambridge. He was baptised on 6 November 1908 in St Andrew the Great. He was a Chartered Surveyor. He was Church of England. He is recorded in the census on 2 April 1911 in St Andrew the Less, Cambridge. He married **Doris Maie "Jill" ROBERTS** in July 1933 when she was 25. They filed for divorce in 1947. He married **Dorothy Mary COLEMAN** on 26 November 1947 in Cambridge. He died on 19 August 1996 in Cambridge aged 87. He experienced Name.

He was a leading auctioneer and valuer in the Cambridge area during the post 2nd World War years, contributing largely to the success of the family firm of estate agents, Gray, Son, and Cook, which evolved into Gray, Swann, and Cook, then Gray, Cook, and Partners in the days when Estate Agency was a highly respected profession !

He also developed a great interest and knowledge in antique silver, and was responsible for cataloguing the collections of several Cambridge Colleges.

A keen sportsman, he played for many years for Camden C. C., and celebrated 50 years of playing Hockey for Cambridge Town H.C. in 1966.

Doris Maie "Jill" ROBERTS (known as 'Jill'), daughter of John Henry Charles ROBERTS (1878-1915) and Alice Beatrice CROWLEY (1882-1938), was born on 14 May 1908 in Portsmouth Rd, Bournemouth, Dorset. She died circa October 1993 in Bournemouth, Dorset. She and Percy Charles GRAY had the following children:

+163 Jonathan Charles GRAY (1937-)

Dorothy Mary COLEMAN was born on 26 July 1907 in Royston, Hertfordshire. She died of a "pocket" in her throat which became septic, in September 1984 in Cambridge aged 77.

139. **Charles George HILL**, son of Arthur HILL and Rowena Harriet CUTTER, was born in 1898 in Linton, Cambridgeshire. He married **Florence WHITTAKER** in 1920 in Edmonton, Middlesex. He died on 15 December 1920 in Holburn, Middlesex.

140. **Constance Rowena HILL**, daughter of Arthur HILL and Rowena Harriet CUTTER, was born on 25 February 1902 in Linton. She married **George WARNES** in 1926 in Pancras, Middlesex. She died in 1974 in Haringey, London, Essex.

142. **Agnes HILL**, daughter of Rowland HILL and Lucy Harriet ROSE, married **Murl RANDALL**.

Murl RANDALL and Agnes HILL had the following children:

+164 Barbara RANDALL (1934-)

152. **Alfred Henry W. DENNIS**, son of Alfred Strange Cottage DENNIS and Francis Isobel CACKETT, was born in 1899 in Gravesend, Kent. He died in 1958 in Dartford, Kent.

Alfred Henry W. DENNIS had the following children:

165	Sister of Alice BUTTERY (-)
+166	Alice Mabel BUTTERY (-)

154. **Ellen DENNIS** (known as 'Doris'), daughter of Alfred Strange Cottage DENNIS and Francis Isobel CACKETT, was born on 27 November 1905 in Gravesend. She married **Cecil G. CHESTER** in 1924 in Gravesend. She died in 1995 in Gravesend.

155. **William Frederick DENNIS**, son of Alfred Strange Cottage DENNIS and Francis Isobel CACKETT, was born on 14 December 1907 in Gravesend. He married **Grace C. MILLS** in 1938 in Eastry, Kent. He died in October 1985 in Gravesend.

156. **Arthur Victor DENNIS**, son of Alfred Strange Cottage DENNIS and Francis Isobel CACKETT, was born in 1910 in Gravesend. He died in 1950 in Chatham, Kent. He married **Claire DENNIS**.

Twelfth Generation



Spouse: Coryse DE LIFFIAC, Coryse Gray née de Liffiac

163. **Jonathan Charles GRAY**, son of Percy Charles GRAY and Doris Maie "Jill" ROBERTS, was born on 4 January 1937 in Cambridge. He was baptised on 5 March 1937 in St John's Church, Hills Road, Cambridge aged 3 months. He was a Mechanical engineer. He married **Florence SIE Lee Lian** on 25 March 1966 in Poole, Dorset. They were divorced circa February 2005. He married **Coryse DE LIFFIAC** on 21 May 2005 in Church of St Peter & St Paul, Kimpton, Hampshire.

Sponsors:- Gertrude Chapman, Arthur Chapman, Percy Charles Gray, and ? Valentine ? Morgan.

Florence SIE Lee Lian (also known as Florence SIE) was born on 10 June 1939 in Sandakan, Sabah, East Malaysia. She and Jonathan Charles GRAY had the following children:

+167	Christopher Charles William GRAY (1967-)
+168	Richard Charles Jonathan GRAY (1968-)

Coryse DE LIFFIAC was born on 18 August 1940 in Paris, France.

164. On 4 November 0010 **Barbara RANDALL**, daughter of Murl RANDALL and Agnes HILL, lived in Pharr, Texas. She was born on 26 September 1934 in St Catharines, Lincoln, Ontario, Canada. She was baptised on 28 October 1934 in St Catharines. She married **Beverly Ernest DRANE** on 4 June 1954 in St Catharines.

Beverly Ernest DRANE was born on 15 January 1928 in Owen Sound, Grey County, Ontario, Canada. He and Barbara RANDALL had the following children:

169	Debra Ann DRANE (1955-). <i>Debra was born on 14 January 1955.</i>
170	Randy Dean DRANE (1956-). <i>Randy was born on 18 March 1956.</i>

- 171 Lori Lynn DRANE (1959-). *Lori was born on 11 January 1959.*
 172 Richard Ernest DRANE (1961-). *Richard was born on 5 April 1961.*
 173 Shelley Bea DRANE (1964-). *Shelley was born on 17 December 1964.*

166. **Alice Mabel BUTTERY**, daughter of Alfred Henry W. DENNIS, married **Edward Cottage DENNIS** in 1883 in Croydon, London.

Edward Cottage DENNIS, son of Robert DENNIS (1840-1891) and Lydia COTTAGE (1842-), was born in 1860 in Linton, Cambridgeshire. He died in 1919 in Gravesend, Kent. He and Alice Mabel BUTTERY had the following children:

- 174 Edward Henry R. DENNIS (1884-). *Edward was born in 1884 in Gravesend.*
 175 Harry Frank DENNIS (1888-). *Harry was born in 1888 in Gravesend.*

Thirteenth Generation



Christopher Charles William GRAY, Chris Gray



Spouse: Irene TVEDT

167. **Christopher Charles William GRAY**, son of Jonathan Charles GRAY and Florence SIE Lee Lian, was born on 6 February 1967. He was a Mechanical engineer. He married **Irene TVEDT** on 26 May 2000 in London.

Irene TVEDT was born on 31 August 1975 in Norway. She was a Midwife. She and Christopher Charles William GRAY had the following children:

- +176 Isabelle GRAY (2001-)
 +177 Freya Elizabeth GRAY (2004-)



Richard Charles Jonathan GRAY, Richard Gray



Spouse: Katherine HOLLAND, Kate

168. **Richard Charles Jonathan GRAY** (known as 'Richard'), son of Jonathan Charles GRAY and Florence SIE Lee Lian, was born on 18 October 1968 in Sandakan, Sabah, East Malaysia. He was a Human Resources Consultant. He married **Katherine HOLLAND** on 20 September 1997 in Harpenden, Hertfordshire.

Katherine HOLLAND (known as 'Kate') was born on 4 November 1969 in Harpenden. She was born on 4 November 1969 in Harpenden. She and Richard Charles Jonathan GRAY had the following children:

- +178 Emilia GRAY (1999-)
 +179 Jessica GRAY (2001-)
 +180 Edward GRAY (2004-)

Fourteenth Generation



Isabelle GRAY

176. **Isabelle GRAY**, daughter of Christopher Charles William GRAY and Irene TVEDT, was born on 28 December 2001.



Freya Elizabeth GRAY

177. **Freya Elizabeth GRAY**, daughter of Christopher Charles William GRAY and Irene TVEDT, was born on 26 June 2004 in Hammersmith, Greater London.



Emilia GRAY

178. **Emilia GRAY**, daughter of Richard Charles Jonathan GRAY and Katherine HOLLAND, was born on 19 August 1999.



Jessica GRAY

179. **Jessica GRAY**, daughter of Richard Charles Jonathan GRAY and Katherine HOLLAND, was born on 5 June 2001.



Edward GRAY

180. **Edward GRAY**, son of Richard Charles Jonathan GRAY and Katherine HOLLAND, was born on 26 January 2004.